



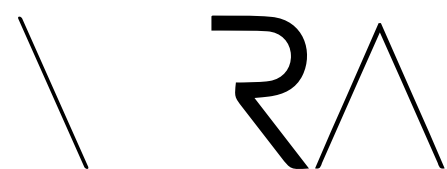
Roelof Rabe Argitekto was shortlisted to submit a conceptual design for the existing FABI II Building that is positioned just of the Lunnan Road Entrance along one of the main pedestrian corridors on the University of Pretoria Hatfield Campus. The addition to the FABI II building is envisioned as a symbol of sustainability, ambition, optimism and determination as it will be home to the first institute for Innovation Africa@UP.

The Concept for the building is envisioned as an extension growing from the stems of the existing FABI II building. By using the existing structural grid and cores as the base, the new lightweight structure is cultivated in a modular approach, this allows the building to become adaptable for future expansion within a cost-effective environment. [VIEW PROJECT](#)



INDUSTRIAL **REVOLUTION**

At Roelof Rabe Argitekthe we like the challenge Industrial Architecture bring - between strict design parameters and challenging sites, we stake our claim on good design principles. The brief was to design an up-market, light industrial unit with the possibility of subdividing it into a two-unit building. The concept was to create a strong identity through the use of modern lines. Enter Rivergate Industrial Building on Erf 112. With the recent green light on all the Planning Approvals, watch this space. [VIEW PROJECT](#)



BACK TO YOUR **ROOTS**

When relocating back to your hometown, one get the chance to rethink your priorities. The brief was to design an easy-living family home that responds to the context - not only on a micro level, but also on a macro level. The design maximises the opportunities for views over the surrounding farmlands and strengthens the connection between the family and their roots. [VIEW PROJECT](#)



IN OUR **STRIDE**

The newest addition to the dynamic team at Roelof Rabe Argitekthe is candidate architect Karla Veldsman.

Big city lights and urban noise have their appeal, yes. But Karla is interested, intrigued and always drawn to the quiet, unassuming and honest Karoo towns and spaces.

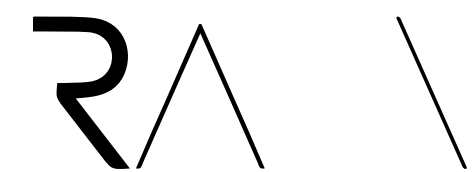
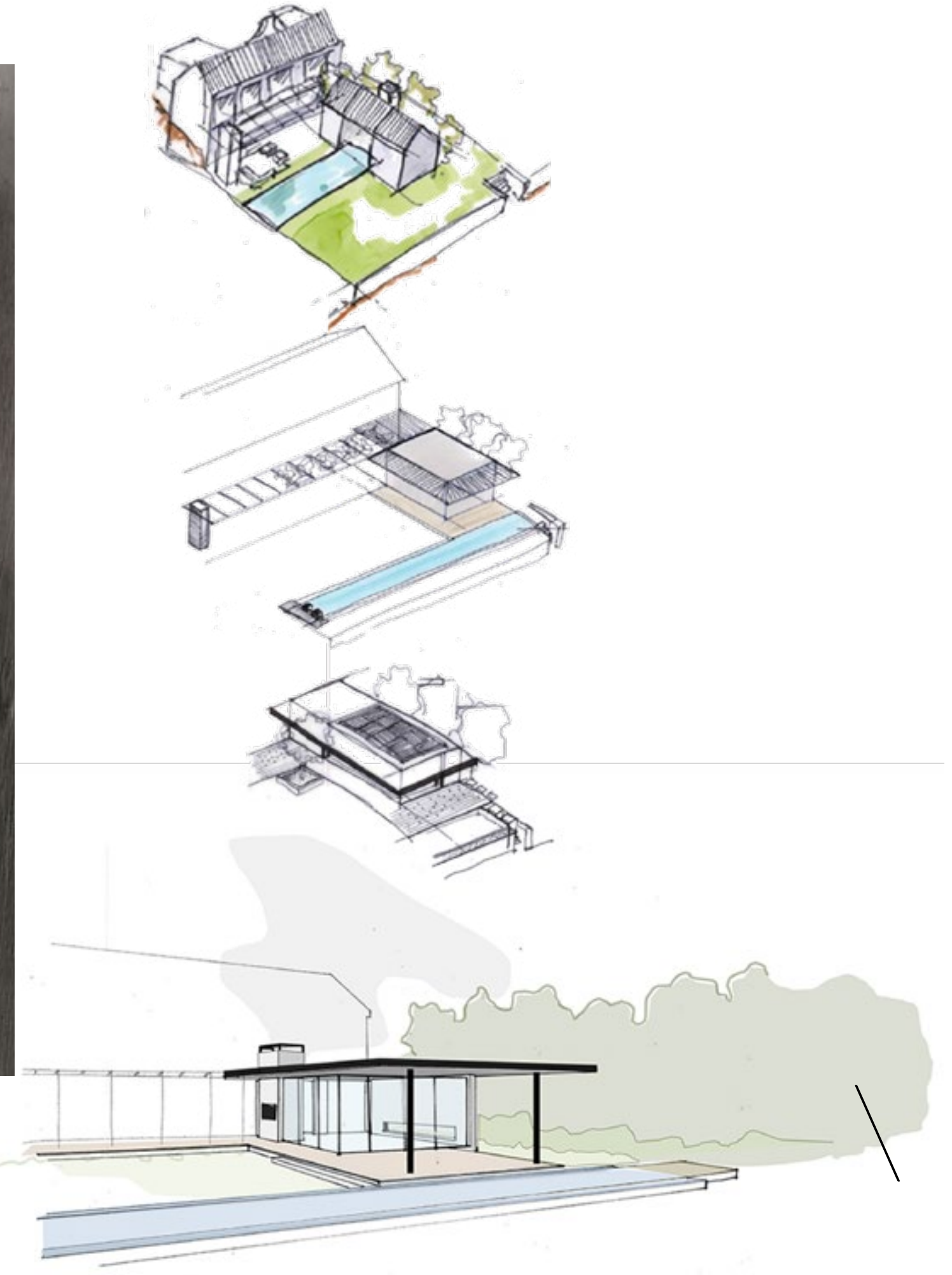
A building is never just that to her. It is a story, a time capsule, a series of decisions taken. Why these materials? Where do the materials come from? Why that design? What do the details or lack of them reveal about the buildings' heritage?

Karla doesn't just drive through towns, she absorbs their architecture and embraces the narrative revealed in the vernacular.

When listening to what it is that keeps her inspired, her answer is refreshingly simple: Each building has a story. And like us, each one has been shaped by its environment, its past and future.

Stories and stoeps define her design process and style. Every project has a thread, a story which shapes everything else. And in true South African style, Karla sits on the metaphorical stoep of her projects, taking the time to understand what the client and building needs from her.

Karla always has room for just one more story (her large family has taught her to make space for anything) and for that we are thankful. Because it takes someone special to honour a space, a place and people through creating and loving architecture for exactly that reason.



ROELOFRABE.CO.ZA

ADMIN@ROELOFRABE.CO.ZA

ROELOF RABE
ARGITEKTE